

Side Entry Agitators



Application

The side entry agitators are used in process and storage tanks in the applications of the food-processing industry.

The main application is the agitation of low viscosity products like wine, oil, milk, beer, alcohol, etc. in large volume tanks.

Operation

These agitators are installed in an inclined position. The rotation of the propeller creates a flow that impales the product to the bottom of the tank and then raises it up to the surface along the wall opposite to the agitator.

The effect is promoted if the bottom is curved. The agitator is installed decentralized to enhance the circular flow. Thus a complete homogenization of the product is achieved.

User Benefits

Versatile, modular, hygienic design
Can be configured for minimum energy consumption
Gentle product treatment
More uptime and higher yields due to low maintenance

Technical Specifications

Materials

Parts in contact with the product.....	AISI 316L
Lantern and bearing support.....	GG 15
Mechanical seal.....	C/SiC/EPDM
Gaskets.....	EPDM
Surface finish.....	Ra ≤ 0,8 µm

Options

Double flushed mechanical seal.
 Shaft and propeller lined with plastic material for use with corrosive products.
 Welded propeller with Ra ≤ 0,5 µm surface finish.
 Motor shroud.
 Motors with other protections.
 Gasket: Viton
 Different propeller type.
 ATEX motor.
 HighFlow Propeller.

Selection Parameters

TYPE	Flow ⁽¹⁾ (m ³ /h)	Tank ⁽²⁾ Volume (m ³)	Power (kw)	Speed (rpm)	Weigth (kg)
SKYR 02-05-325	243	5-20	0,55		55
SKYR 02-07-400	455	20-50	0,75		58
SKYR 02-15-500	915	50-100	150	200	65
SKYR 02-30-600	1550	100-150	300		78
SKYR 02-40-650	1973	150-200	400		136

TYPE	Flow (m ³ /h)	Tank Volume (m ³)	Power (kw)	Speed (rpm)	Weigth (kg)
SKYM 15-15-175	275	5-20	1,5		47
SKYM 15-30-200	415	20-50	30		57
SKYM 15-55-225	815	80-140	5,5	1500	67
SKYM 15-75-250	1081	80-140	7,5		76
SKYM 15-11-275	270	140-200	110		146
SKYM 10-01-200	385	5-20	1,1		49
SKYM 10-22-225	555	20-60	2,2		63
SKYM 10-30-250	715	20-60	30		67
SKYM 10-40-275	935	60-90	40	1000	76
SKYM 10-55-300	1455	90-150	5,5		151
SKYM 10-75-350	1455	150-200	7,5		183

Propeller Type



HighFlow Propeller

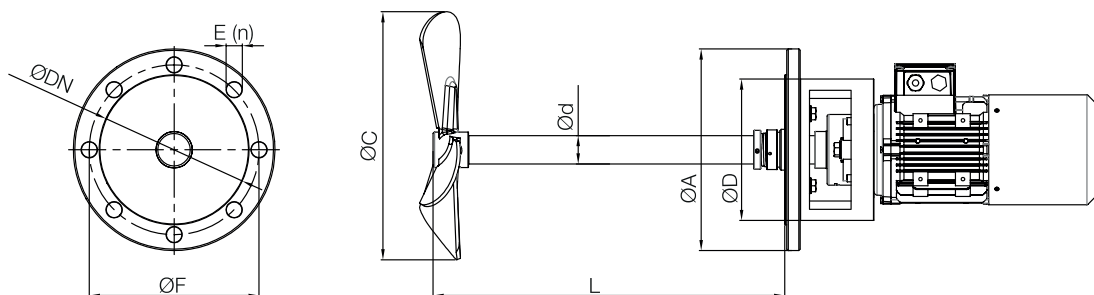


Marine Propeller

The design of the propeller have a decisive influence on the process engineering and mechanical properties.

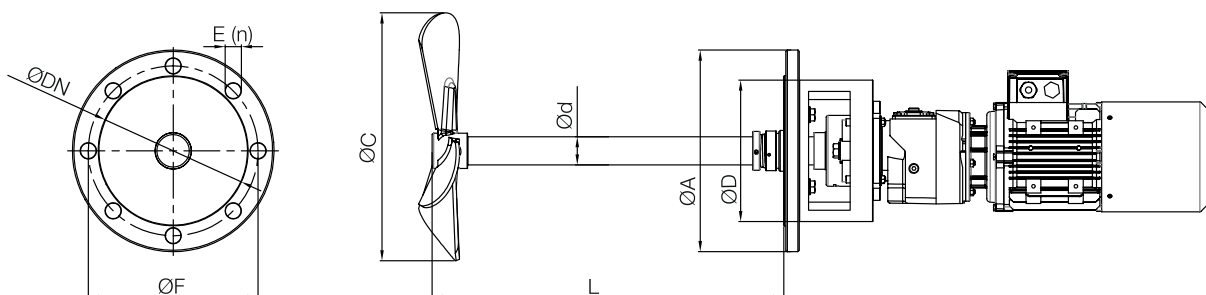
Thanks to specific design of HighFlow propeller , it can be used when the tank volume is bigger thank 200 m3. Compared to other conventional propeller , it pumps more flow and delivers more energy to fluid with low power consumption.

Dimensions SKYM



TYPE	ØDN	ØF	ØA	Ød	ØD	E (n)	L	ØC
SKYM 15-15-175	150	240	285	40	212	18(8)	400	175
SKYM 15-30-200	150	240	285	40	212	18(8)	500	200
SKYM 15-55-225	200	295	340	50	259	23(8)	500	225
SKYM 15-75-250	200	350	395	50	259	23(8)	500	250
SKYM 15-11-275	250	240	285	60	312	23(12)	600	275
SKYM 10-01-200	150	240	285	40	212	18(8)	400	200
SKYM 10-22-225	150	295	340	40	212	18(8)	500	225
SKYM 10-30-250	200	395	340	50	259	23(8)	500	250
SKYM 10-40-275	200	350	395	50	259	23(8)	500	275
SKYM 10-55-300	250	350	395	60	312	23(12)	600	300
SKYM 10-75-350	250	350	395	60	312	23(12)	600	350

Dimensions SKYR



TYPE	ØDN	ØF	ØA	Ød	ØD	E (n)	L	ØC
SKYR 02-05-325	150	240	285	40	212	18(8)	400	325
SKYR 02-07-400	150	240	285	40	212	18(8)	400	400
SKYR 02-15-500	150	240	285	40	212	18(8)	400	500
SKYR 02-30-600	200	295	340	50	259	23(8)	500	600
SKYR 02-40-650	250	350	395	60	312	23(12)	500	650